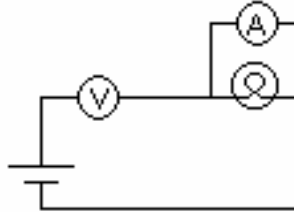


## UNIT 10 PRETEST

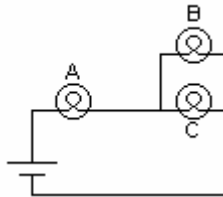
1) Consider the circuit shown below.



**a.** Is the ammeter connected correctly to measure the current through the bulb. Explain.

**b.** Is the voltmeter connected correctly to measure the voltage across the battery.

2) Consider the circuit shown below.



**a.** If a voltmeter connected across bulb B reads 0.5 volts, what is the voltage across bulb A (assume a 1.5V battery)?

**b.** If a voltmeter connected across bulb B reads 0.5 volts, what is the voltage across bulb C (assume a 1.5V battery)?